



Statistics Office
HM Government of Gibraltar

Air Traffic Survey 2022





Statistics Office

HM Government of Gibraltar

AIR TRAFFIC SURVEY 2022



Statistics Office
HM Government of Gibraltar

Statistics Online

Copies of the Air Traffic Survey can be obtained, free of charge from the Statistics Office and are also available for download from the Gibraltar Government Website (<http://www.gibraltar.gov.gi/new/downloads>).

Historical data can be downloaded from previous copies of the report available on-line.

Comments and requests for general information should be addressed to:

Statistics Office
Suite 3.22 World Trade Center
6 Bayside Road
Or
E-mail: statistics@gibraltar.gov.gi
Tel: +350 20075515 / +350 20075490 / +350 20052541

PREFACE

The Statistics (Air Traffic Survey) Order 1971 requires that the Government Statistician prepare a report and summary of the findings of the Air Traffic Survey to be laid before the Gibraltar Parliament.

This report contains statistical data on air traffic operations between Gibraltar and other destinations for both scheduled and charter airlines for the years 1998 to 2022. It also includes some general data on commercial freight and on the number of flights arriving in Gibraltar.

The impact of the Coronavirus (COVID-19) global pandemic on air traffic is evident throughout 2020 and the earlier part of 2021.

I must express my thanks to the Gibraltar Air Terminal Ltd and Borders and Coastguard Agency for their continued co-operation in the conduct of this Survey.

GOVERNMENT STATISTICIAN

DEFINITIONS AND NOTES

- | | | |
|-----|------------------------|---|
| (a) | Passenger Load Factor: | $\frac{\text{All seats used}}{\text{All seats offered (less in-transits)}} \times 100$ |
| (b) | Revenue Load Factor: | $\frac{\text{All seats used by "paying" passengers}}{\text{All seats offered (less in-transits)}} \times 100$ |
- (c) Scheduled Flights: are regular flights planned according to a published timetable, including those supplementary thereto, and available for use by members of the public.
- (d) Charter Flights: includes flights carrying 10 or more passengers, other than scheduled services and Ministry of Defence
- (e) In interpreting the figures it should be noted that:
- (i) Flights to and from Manchester re-commenced in September 2008. Flights were suspended between April and June 2020 and between February and April 2021 due to the Coronavirus (Covid-19) global pandemic. Flights resumed in May 2021.
 - (ii) Flights to and from Heathrow re-commenced in October 2009.
 - (iii) Flights to and from Madrid re-commenced in April 2009 and ended in March 2010.
 - (iv) Flights to and from Liverpool commenced in March 2011 and ended in October 2012.
 - (v) Flights to and from East Midlands commenced in March 2012 and ended in September 2012.
 - (vi) Flights to and from Birmingham commenced in March 2013 and ended in October 2017. Flights re-commenced in May 2021 and ended in October 2021.
 - (vii) Flights to and from Marrakech commenced in April 2014 and ended in July 2014.
 - (viii) Flights to and from Tangier commenced in March 2015. Flights to and from Tangier were suspended in April 2020 and did not resume thereafter due to the coronavirus (COVID-19) global pandemic.
 - (ix) Flights to and from Bristol commenced in April 2015. Flights were suspended between April and July 2020 and between February and April 2021 due to the Coronavirus (COVID-19) global pandemic. Flights resumed in May 2021.
 - (x) Monarch Flights to and from Gatwick, Manchester, Luton and Birmingham ceased in October 2017.
 - (xi) Extra flights to and from Gatwick commenced in May 2018 and ended in September 2018. Extra flights restarted in April 2019 to October 2019. Flights to and from Gatwick were suspended between April and June 2020 due to the Coronavirus (COVID-19) global pandemic and resumed in July 2020.
 - (xii) Flights to and from Luton re-commenced in December 2018. Flights were suspended between April and November 2020 due to the Coronavirus (COVID-19) global pandemic. Extra flights to and from Luton commenced in December 2020. Flights were suspended between February and April 2021 due to the Coronavirus (COVID-19) global pandemic. No flights were recorded during August 2021. Luton flights ended in January 2022.
 - (xiii) Flights to and from Edinburgh commenced in June 2021.
 - (xiv) Flights to and from Southampton commenced in May 2021 and ended in October 2021.
 - (xv) Flights to and from London City Airport commenced in June 2021 and ended in September 2021.
 - (xvi) Passenger load factors are calculated on the basis of actual figures and exclude passengers on connecting flights when applicable.
 - (xvii) Revenue load factors are calculated in the same way as passenger load factors except they exclude non-paying passengers.
 - (xviii) Charter flights as from 1998 include all destinations. No Charter operations were recorded during 2008, 2011 - 2013.
 - (xix) The yearly totals have been rounded off from the actual figure and need not necessarily equal the sum of the rounded off sub-totals.
 - (xx) Coronavirus (COVID-19) restrictions on air travel are evident during 2020 and the first quarter of 2021, with decreases in air arrivals and departures.

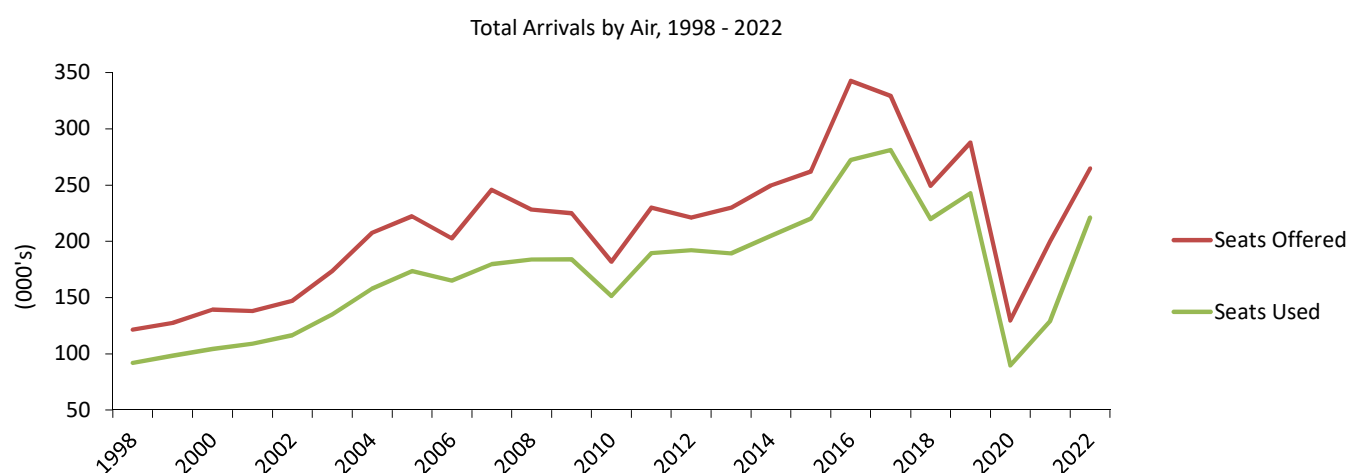
Contents

Tables		Page
1.	Arrivals and Departures by Air	
1.01	Arrivals/Departures by Air, 1998 - 2022	1
2.	Arrivals by Air (Scheduled Flights)	
2.01	Arrivals by Air from U.K., 1998 - 2001	2
2.02	Arrivals by Air from U.K., 2002 - 2005	2
2.03	Arrivals by Air from U.K., 2006 - 2009	3
2.04	Arrivals by Air from U.K., 2010 - 2013	3
2.05	Arrivals by Air from U.K., 2014 - 2016	4
2.06	Arrivals by Air from U.K., 2017 - 2019	4
2.07	Arrivals by Air from U.K., 2020 - 2022	5
2.08	Arrivals by Air from Spain, 2008 - 2010	6
2.09	Arrivals by Air from Tangier, 2018 - 2020	7
3.	Departures by Air (Scheduled Flights)	
3.01	Departures by Air to U.K., 1998 - 2000	8
3.02	Departures by Air to U.K., 2001 - 2003	8
3.03	Departures by Air to U.K., 2004 - 2006	9
3.04	Departures by Air to U.K., 2007 - 2009	9
3.05	Departures by Air to U.K., 2010 - 2012	10
3.06	Departures by Air to U.K., 2013 - 2015	10
3.07	Departures by Air to U.K., 2016 - 2017	11
3.08	Departures by Air to U.K., 2018 - 2019	11
3.09	Departures by Air to U.K., 2020 - 2022	12
3.10	Departures by Air to Spain, 2008 - 2010	13
3.11	Departures by Air to Tangier, 2018 - 2020	14
4.	Arrivals by Air (Charter Flights)	
4.01	Arrivals by Air, 2007, 2009 - 2010	15
4.02	Arrivals by Air, 2014 - 2016	15
4.03	Arrivals by Air, 2017 - 2019	16
4.04	Arrivals by Air, 2020 - 2022	16
5.	Departures by Air (Charter Flights)	
5.01	Departures by Air, 2007, 2009 - 2010	17
5.02	Departures by Air, 2014 - 2016	17
5.03	Departures by Air, 2017 - 2019	18
5.04	Departures by Air, 2020 - 2022	18
6.	Aircraft Arrivals	
6.01	Aircraft Arrivals, 2015 - 2022	19
7.	Commercial Freight	
7.01	Set Down and Picked Up by Air, Gibraltar, 1998 - 2022	20

1: Arrivals and Departures by Air

Table 1.01 Arrivals/Departures by Air, 1998 - 2022

Year	Arrivals (000's)						Departures (000's)					
	Total		Scheduled		Charter		Total		Scheduled		Charter	
	Seats Offered	Seats Used	Seats Offered	Seats Used	Seats Offered	Seats Used	Seats Offered	Seats Used	Seats Offered	Seats Used	Seats Offered	Seats Used
1998	121.5	92.0	120.4	91.0	1.2	1.1	120.2	91.0	119.0	90.1	1.2	0.9
1999	127.5	98.3	126.5	97.8	1.0	0.5	127.5	97.9	126.5	97.4	1.0	0.5
2000	139.4	104.3	138.6	103.7	0.8	0.5	138.9	107.1	138.1	106.6	0.8	0.5
2001	138.0	109.0	137.7	108.8	0.3	0.2	138.2	110.6	137.9	110.5	0.4	0.2
2002	147.2	116.6	146.3	115.7	0.9	0.9	147.0	114.8	146.1	114.0	0.9	0.9
2003	173.5	135.0	170.3	133.0	3.3	2.0	173.1	134.8	169.8	132.9	3.3	1.9
2004	207.6	157.9	206.4	157.0	1.2	0.9	207.6	158.3	206.4	157.3	1.2	0.9
2005	222.4	173.5	221.6	172.7	0.8	0.8	222.2	174.4	221.4	173.7	0.8	0.7
2006	202.7	165.2	202.0	164.6	0.7	0.6	202.6	166.0	201.9	165.4	0.7	0.6
2007	245.9	179.7	244.1	179.3	1.8	0.5	246.2	181.6	244.3	180.6	1.8	1.0
2008	228.3	183.7	228.3	183.7	-	-	228.3	187.3	228.3	187.3	-	-
2009	225.0	183.9	224.8	183.7	0.2	0.2	224.9	186.2	224.7	186.0	0.2	0.2
2010	181.9	151.5	181.0	151.0	0.8	0.5	182.0	152.7	181.2	152.1	0.8	0.6
2011	230.1	189.5	230.1	189.5	-	-	230.1	193.5	230.1	193.5	-	-
2012	221.0	192.2	221.0	192.2	-	-	221.2	193.6	221.2	193.6	-	-
2013	229.9	189.4	229.9	189.4	-	-	227.6	193.4	227.6	193.4	-	-
2014	249.7	204.9	248.7	204.6	1.0	0.3	249.8	209.4	248.8	209.1	1.0	0.3
2015	262.1	220.2	261.8	220.0	0.3	0.2	262.4	221.7	262.2	221.5	0.3	0.2
2016	342.7	272.2	342.5	272.0	0.2	0.2	342.7	274.9	342.5	274.8	0.2	-
2017	329.2	281.1	329.1	281.0	0.2	0.2	329.2	286.0	329.0	285.8	0.2	0.2
2018	249.2	219.8	248.1	219.7	1.2	0.1	247.7	220.2	246.5	219.7	1.2	0.5
2019	287.8	242.8	286.5	241.9	1.3	0.9	287.5	246.5	286.2	245.5	1.3	0.9
2020	129.7	89.8	126.6	89.1	3.1	0.7	130.2	94.6	126.8	93.4	3.4	1.2
2021	200.3	129.2	195.4	128.0	4.8	1.2	200.5	131.9	195.7	130.8	4.8	1.1
2022	264.7	221.1	263.6	220.7	1.1	0.4	264.7	223.2	263.3	222.9	1.4	0.3



Note:
Coronavirus (COVID-19) restrictions on air travel are evident during 2020 and earlier part of 2021.

2: Arrivals by Air (Scheduled Flights)

Table 2.01 Arrivals by Air from U.K. (Scheduled Flights), 1998 - 2001

	Seats used (000's)				Seats offered (000's)				Load factor (%)			
	1998	1999	2000	2001	1998	1999	2000	2001	1998	1999	2000	2001
January	4.8	5.2	4.6	5.4	9.4	8.4	11.1	9.4	51.1	62.5	41.5	57.3
February	6.0	6.3	6.2	6.9	9.0	7.4	9.8	8.3	66.4	84.5	63.6	82.7
March	7.6	8.1	8.7	8.6	9.8	8.8	10.7	9.8	78.1	91.4	81.3	87.9
April	7.8	7.8	9.1	9.0	10.0	9.8	10.4	10.6	77.9	80.4	87.2	84.5
May	9.0	10.0	10.1	11.1	11.4	12.5	13.4	13.2	79.0	80.3	75.9	83.6
June	8.0	9.8	9.7	11.0	10.9	11.8	12.4	12.8	73.6	82.7	78.3	85.7
July	9.3	10.7	10.8	11.7	10.6	12.4	13.4	13.5	87.3	85.8	80.8	86.6
August	9.2	9.2	10.1	10.5	11.2	11.6	12.9	13.4	82.2	79.2	78.1	78.3
September	8.4	8.9	10.5	10.2	10.7	11.8	12.7	12.8	78.0	75.6	82.5	79.5
October	8.2	8.3	10.0	9.5	11.2	11.7	13.4	13.4	73.1	70.3	74.6	70.9
November	6.5	6.5	7.0	7.5	8.4	9.7	9.1	10.6	78.0	67.0	76.2	71.1
December	6.3	7.1	7.0	7.5	7.9	10.6	9.3	9.7	79.7	66.9	75.0	76.5
Total	91.0	97.8	103.7	108.8	120.4	126.5	138.6	137.7	75.6	77.3	74.9	79.0

Table 2.02 Arrivals by Air from U.K. (Scheduled Flights), 2002 - 2005

	Seats used (000's)				Seats offered (000's)				Load factor (%)			
	2002	2003	2004	2005	2002	2003	2004	2005	2002	2003	2004	2005
January	5.5	6.5	7.5	10.0	9.3	11.4	12.4	15.9	59.6	57.4	60.0	62.7
February	7.6	7.9	9.2	10.5	8.9	9.3	11.9	14.4	85.9	84.8	77.8	73.2
March	10.2	10.3	12.4	13.4	11.7	13.2	15.4	16.6	87.4	78.2	80.7	80.7
April	8.0	11.0	12.9	13.9	10.7	13.2	16.7	17.6	75.2	82.9	77.0	78.9
May	10.4	13.0	14.0	16.0	14.1	16.1	20.2	21.1	73.8	80.9	69.3	75.8
June	10.4	12.2	14.3	16.2	13.3	15.6	19.5	20.4	78.3	78.6	73.4	79.7
July	13.2	14.6	17.5	18.4	14.6	16.1	20.1	21.1	90.4	90.6	87.2	87.4
August	12.2	13.2	16.2	18.2	14.3	16.1	20.2	21.2	85.5	81.8	80.4	85.8
September	11.4	12.0	15.5	17.0	13.6	15.5	19.6	20.5	83.6	77.2	79.0	83.3
October	11.0	12.3	14.3	16.4	14.4	15.9	20.3	20.9	76.4	77.5	70.6	78.4
November	8.0	10.2	11.7	11.5	10.7	14.1	15.2	16.7	74.7	71.9	76.8	69.0
December	7.6	9.8	11.6	11.1	10.7	13.8	15.0	15.3	71.4	71.3	77.0	72.7
Total	115.7	133.0	157.0	172.7	146.3	170.3	206.4	221.6	79.1	78.1	76.1	77.9

2: Arrivals by Air (Scheduled Flights)

Table 2.03 Arrivals by Air from U.K. (Scheduled Flights), 2006 - 2009

	Seats used (000's)				Seats offered (000's)				Load factor (%)			
	2006	2007	2008	2009	2006	2007	2008	2009	2006	2007	2008	2009
January	9.7	7.8	9.0	10.9	15.5	11.4	13.0	15.6	62.7	68.7	69.4	69.8
February	10.7	7.8	8.6	12.2	14.8	10.8	10.4	15.5	72.5	72.3	83.2	79.1
March	14.6	9.6	11.3	16.1	17.6	12.7	12.3	18.7	83.3	75.4	91.2	86.5
April	15.2	11.1	15.1	16.3	17.8	14.0	18.3	19.3	85.2	79.6	82.8	84.7
May	17.1	13.7	16.8	17.0	19.3	16.8	19.4	18.8	88.6	81.1	86.8	90.3
June	16.8	13.4	15.8	17.0	19.8	16.4	18.9	18.5	84.9	81.7	83.4	92.0
July	17.9	15.5	19.4	17.7	19.6	16.9	21.4	19.1	91.2	91.7	90.6	92.9
August	14.4	13.4	18.1	16.3	17.4	16.4	21.3	18.8	82.9	81.7	85.2	86.8
September	13.9	14.1	17.7	15.9	17.6	16.4	22.2	18.4	79.0	85.9	79.7	86.3
October	13.8	14.1	18.1	15.6	17.4	17.0	22.2	18.4	79.5	82.5	81.1	84.7
November	9.8	11.2	13.9	11.1	11.7	13.2	19.4	14.1	83.7	84.7	71.7	79.1
December	10.7	10.5	15.2	10.6	13.6	12.7	18.7	13.1	78.8	82.6	81.2	80.8
Total	164.6	142.1	179.0	176.8	202.0	174.8	217.5	208.1	81.5	81.3	82.3	84.9

Table 2.04 Arrivals by Air from U.K. (Scheduled Flights), 2010 - 2013

	Seats used (000's)				Seats offered (000's)				Load factor (%)			
	2010	2011	2012	2013	2010	2011	2012	2013	2010	2011	2012	2013
January	9.0	9.1	11.4	8.9	13.0	14.0	15.8	13.5	69.1	65.4	72.3	66.1
February	9.5	10.1	12.9	12.0	11.6	13.4	15.0	13.8	81.5	75.0	86.4	86.6
March	12.1	12.8	15.9	14.8	14.0	16.1	17.0	16.3	86.3	79.8	93.4	90.6
April	9.7	15.3	16.2	13.6	11.5	18.5	20.2	17.4	84.4	83.0	80.1	78.1
May	13.4	17.1	16.9	16.6	15.7	21.3	19.1	19.5	85.0	80.5	88.8	85.0
June	14.2	18.2	18.3	18.0	15.7	22.3	20.1	20.7	90.6	81.8	90.9	87.1
July	15.1	21.5	20.8	21.1	16.2	23.9	21.9	23.0	93.3	89.9	95.3	91.6
August	14.9	21.5	19.8	19.7	16.2	24.1	21.7	22.7	91.6	89.2	91.1	86.7
September	14.4	18.8	17.4	18.6	16.4	22.4	19.7	22.8	87.6	84.0	88.4	81.7
October	15.1	17.1	17.1	17.5	18.2	20.8	19.7	22.3	83.0	82.4	87.0	78.4
November	11.9	13.8	12.1	14.0	15.6	16.8	15.0	19.0	76.2	82.2	80.6	73.9
December	10.9	14.1	13.4	14.6	13.7	16.7	16.0	18.9	79.2	84.5	83.7	77.4
Total	150.1	189.5	192.2	189.4	178.0	230.1	221.0	229.9	84.3	82.4	86.9	82.4

2: Arrivals by Air (Scheduled Flights)

Table 2.05 Arrivals by Air from U.K. (Scheduled Flights), 2014 - 2016

	Seats used (000's)			Seats offered (000's)			Load factor (%)		
	2014	2015	2016	2014	2015	2016	2014	2015	2016
January	12.2	11.4	13.3	18.3	16.3	19.4	66.4	70.1	68.6
February	13.4	12.5	15.1	17.6	15.4	18.9	76.4	80.7	80.0
March	16.6	16.3	20.5	19.7	17.7	23.5	84.1	92.0	87.1
April	16.5	16.4	19.9	19.5	19.4	25.8	84.8	84.3	77.2
May	17.3	20.1	25.5	20.4	22.9	31.6	84.9	87.9	80.7
June	17.8	20.9	24.8	21.2	23.7	30.7	84.0	88.1	80.7
July	21.3	24.2	30.5	23.8	25.2	34.6	89.6	96.1	88.0
August	20.9	22.8	29.0	24.4	25.7	35.3	85.7	88.8	82.1
September	19.3	21.3	26.7	23.3	24.6	33.0	83.0	86.4	81.0
October	19.2	20.7	25.0	22.2	24.9	32.6	86.6	83.0	76.8
November	14.4	15.6	18.6	19.5	20.5	24.7	73.9	75.9	75.3
December	15.6	16.7	21.2	18.9	19.9	25.3	82.7	83.9	83.7
Total	204.6	218.7	270.1	248.7	256.2	335.4	82.3	85.4	80.5

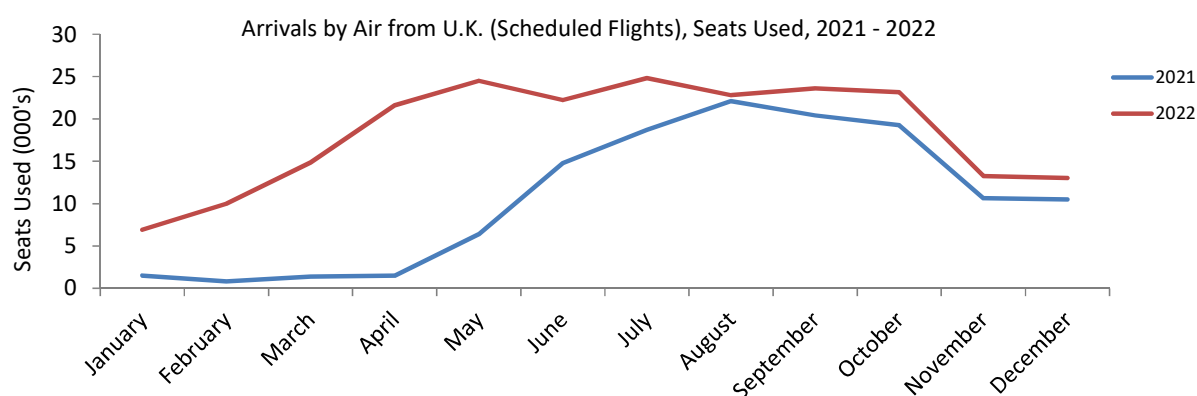
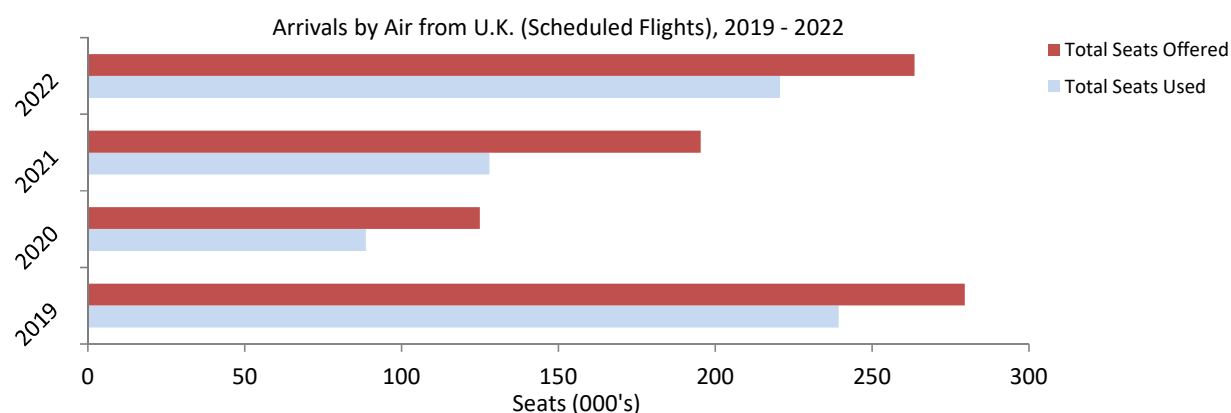
Table 2.06 Arrivals by Air from U.K. (Scheduled Flights), 2017 - 2019

	Seats used (000's)			Seats offered (000's)			Load factor (%)		
	2017	2018	2019	2017	2018	2019	2017	2018	2019
January	14.7	10.2	12.1	22.2	12.0	16.7	66.0	85.1	72.2
February	17.9	12.5	14.9	22.0	13.7	18.0	81.6	90.8	82.6
March	23.0	14.7	17.9	27.1	15.7	20.3	84.9	93.7	88.5
April	27.5	18.3	20.6	32.7	20.4	24.7	84.0	89.7	83.6
May	29.2	20.4	24.6	32.6	21.0	28.3	89.8	97.3	87.0
June	27.9	22.1	23.9	32.1	23.5	27.6	86.9	94.1	86.5
July	32.6	24.1	25.0	35.3	25.2	27.7	92.4	95.7	90.2
August	31.2	23.4	25.2	35.3	25.8	28.6	88.6	90.5	88.0
September	29.6	22.2	24.1	34.3	25.0	27.9	86.2	88.8	86.2
October	19.1	18.5	22.1	21.1	21.0	26.8	90.4	87.9	82.4
November	12.4	14.4	13.5	13.6	18.3	16.0	90.9	78.9	84.7
December	12.7	16.4	15.4	13.5	19.6	16.9	93.6	83.9	91.1
Total	277.8	217.1	239.3	321.9	241.1	279.5	86.3	90.0	85.6

2: Arrivals by Air (Scheduled Flights)

Table 2.07 Arrivals by Air from U.K. (Scheduled Flights), 2020 - 2022

	Seats used (000's)			Seats offered (000's)			Load factor (%)		
	2020	2021	2022	2020	2021	2022	2020	2021	2022
January	11.4	1.5	6.9	13.7	4.5	11.8	83.0	33.8	58.5
February	14.5	0.8	10.0	16.0	1.8	11.9	90.9	45.8	84.2
March	9.4	1.4	14.8	13.7	2.4	18.0	68.6	57.5	82.4
April	0.4	1.5	21.6	2.6	3.4	25.8	16.9	43.7	83.8
May	1.5	6.4	24.5	3.0	9.8	28.2	49.3	65.4	87.0
June	2.3	14.8	22.2	2.9	22.3	26.0	78.6	66.2	85.4
July	3.8	18.7	24.8	4.5	30.0	27.5	83.9	62.5	90.4
August	12.9	22.1	22.8	19.2	33.0	25.5	66.9	67.1	89.4
September	11.1	20.4	23.6	17.9	30.9	28.5	62.0	66.1	82.9
October	12.1	19.3	23.1	17.0	26.7	29.0	71.2	72.1	79.7
November	2.9	10.6	13.3	4.8	14.7	16.4	60.5	72.5	80.8
December	6.4	10.5	13.0	9.8	16.1	15.0	65.9	65.1	86.5
Total	88.6	128.0	220.7	125.0	195.4	263.6	70.9	65.5	83.7



Notes:

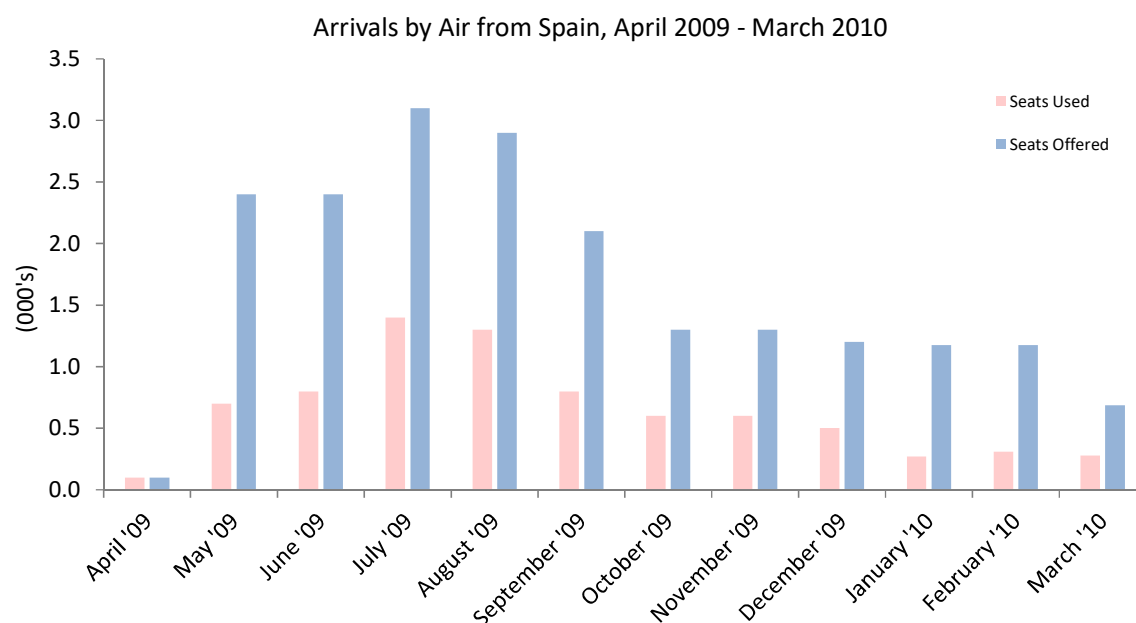
(i) The total yearly figures have been rounded off from the actual figures and need not necessarily equal the sum of the rounded off monthly figures.

(ii) Coronavirus (COVID-19) restrictions on air travel are evident during 2020 and earlier part of 2021.

2: Arrivals by Air (Scheduled Flights)

Table 2.08 Arrivals by Air from Spain (Scheduled Flights), 2008 - 2010

	Seats used (000's)			Seats offered (000's)			Load factor (%)		
	2008	2009	2010	2008	2009	2010	2008	2009	2010
January	0.3	-	0.3	1.1	-	1.2	29.6	-	23.0
February	0.5	-	0.3	1.3	-	1.2	36.0	-	26.4
March	0.5	-	0.3	1.3	-	0.7	42.3	-	40.5
April	0.3	0.1	-	1.1	0.1	-	26.6	51.0	-
May	0.4	0.7	-	1.3	2.4	-	32.5	31.8	-
June	0.5	0.8	-	1.0	2.4	-	53.5	35.1	-
July	0.7	1.4	-	1.1	3.1	-	63.4	45.9	-
August	0.8	1.3	-	1.4	2.9	-	57.0	44.8	-
September	0.6	0.8	-	1.1	2.1	-	49.7	38.8	-
October	-	0.6	-	-	1.3	-	-	47.8	-
November	-	0.6	-	-	1.3	-	-	49.6	-
December	-	0.5	-	-	1.2	-	-	42.9	-
Total	4.7	6.9	0.9	10.7	16.6	3.0	43.3	41.5	28.3



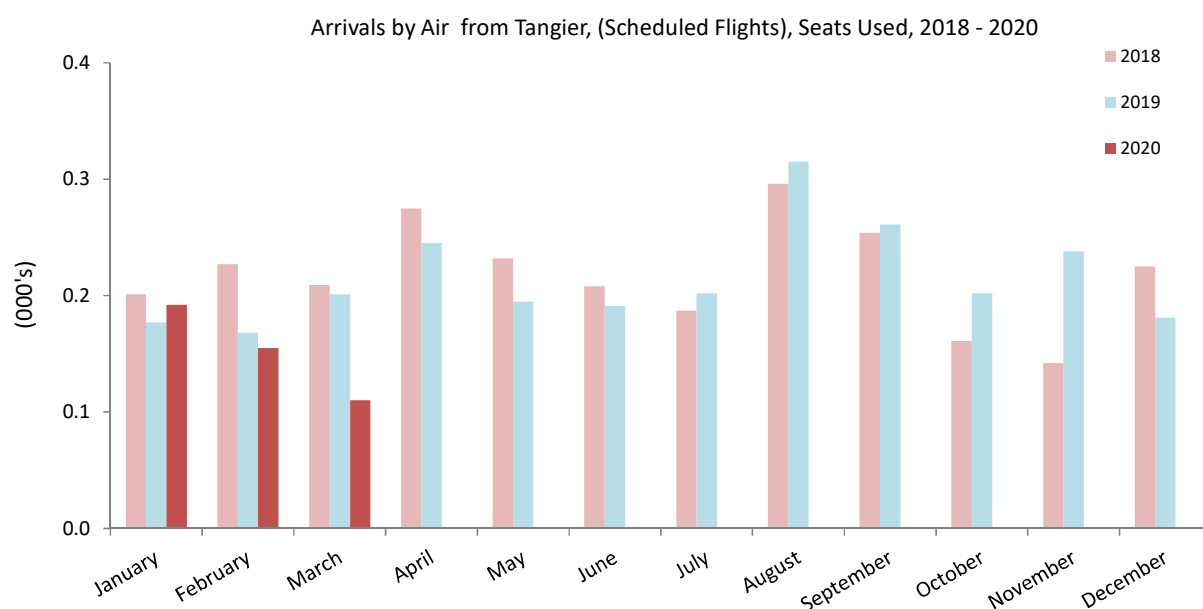
Note:

Flights to and from Madrid re-commenced in April 2009 and ended in March 2010.

2: Arrivals by Air (Scheduled Flights)

Table 2.09 Arrivals by Air from Tangier (Scheduled Flights), 2018 - 2020

	Seats used (000's)			Seats offered (000's)			Load factor (%)		
	2018	2019	2020	2018	2019	2020	2018	2019	2020
January	0.2	0.2	0.2	0.6	0.6	0.6	28.1	28.1	30.5
February	0.2	0.2	0.2	0.6	0.6	0.6	30.0	30.0	27.7
March	0.2	0.2	0.1	0.6	0.6	0.4	31.9	31.9	31.4
April	0.3	0.2	-	0.6	0.6	-	43.8	43.8	-
May	0.2	0.2	-	0.6	0.6	-	31.0	31.0	-
June	0.2	0.2	-	0.6	0.6	-	34.1	34.1	-
July	0.2	0.2	-	0.6	0.6	-	36.1	36.1	-
August	0.3	0.3	-	0.6	0.6	-	50.0	50.0	-
September	0.3	0.3	-	0.6	0.6	-	46.6	46.6	-
October	0.2	0.2	-	0.5	0.6	-	36.1	36.1	-
November	0.1	0.2	-	0.6	0.6	-	42.5	42.5	-
December	0.2	0.2	-	0.6	0.6	-	32.3	32.3	-
Total	2.6	2.6	0.5	7.0	7.0	1.5	44.1	36.8	29.7



Note:

(i) Flights to and from Tangier were suspended in April 2020 due to the Coronavirus (COVID-19) global pandemic and did not resume thereafter.

3: Departures by Air (Scheduled Flights)

Table 3.01 Departures by Air to U.K. (Scheduled Flights), 1998 - 2000

	Seats used (000's)			Seats offered (000's)			Load factor (%)					
	1998	1999	2000	1998	1999	2000	1998		1999		2000	
							(i)	(ii)	(i)	(ii)	(i)	(ii)
January	6.0	6.3	6.5	9.5	8.5	11.1	63.1	(62.7)	74.1	(73.9)	58.8	(58.7)
February	5.3	5.7	6.0	8.7	7.5	9.8	60.7	(60.2)	75.1	(74.3)	61.5	(61.4)
March	6.7	7.0	8.0	9.9	8.5	10.6	67.9	(67.9)	82.8	(82.7)	75.2	(74.9)
April	8.2	8.7	9.1	10.0	9.8	10.1	81.9	(81.7)	89.0	(88.5)	89.4	(89.3)
May	8.0	8.9	9.9	11.2	12.5	13.3	71.3	(70.9)	71.0	(71.0)	74.5	(74.5)
June	8.1	10.0	10.5	10.8	11.6	12.4	74.6	(74.2)	86.3	(86.3)	84.9	(84.8)
July	7.7	9.4	9.8	10.3	12.5	13.4	74.5	(74.3)	75.7	(75.7)	73.0	(72.9)
August	9.9	9.6	10.6	11.1	11.4	12.7	89.5	(89.4)	84.7	(84.7)	83.6	(83.5)
September	9.2	10.2	11.7	10.4	11.8	12.8	88.5	(88.4)	86.3	(86.3)	91.4	(91.2)
October	8.9	9.0	11.1	11.0	11.8	13.2	80.5	(80.3)	76.4	(76.4)	84.2	(84.1)
November	7.1	7.4	7.5	8.3	10.0	9.2	84.9	(84.4)	74.4	(74.4)	82.1	(82.0)
December	5.0	5.1	5.7	7.6	10.6	9.3	66.2	(65.5)	48.0	(47.9)	61.3	(60.8)
Total	90.1	97.4	106.6	119.0	126.5	138.1	75.7	(75.4)	77.0	(76.9)	77.2	(77.1)

Table 3.02 Departures by Air to U.K. (Scheduled Flights), 2001 - 2003

	Seats used (000's)			Seats offered (000's)			Load factor (%)					
	2001	2002	2003	2001	2002	2003	2001		2002		2003	
							(i)	(ii)	(i)	(ii)	(i)	(ii)
January	6.6	6.4	7.5	9.4	9.5	11.4	70.2	(70.2)	67.7	(67.7)	66.2	(66.2)
February	6.6	7.0	7.3	8.4	8.9	9.3	78.9	(78.9)	78.4	(78.4)	77.8	(77.8)
March	7.9	8.4	10.1	9.8	11.1	13.2	81.0	(81.0)	75.7	(75.7)	76.6	(76.6)
April	9.4	9.3	10.5	10.6	10.7	12.9	87.9	(87.9)	86.5	(86.5)	81.1	(81.1)
May	10.2	9.4	12.0	13.3	14.1	16.1	76.7	(76.7)	66.5	(66.5)	74.7	(74.6)
June	11.0	10.5	12.8	12.9	13.3	15.4	85.7	(85.7)	79.1	(79.1)	83.3	(83.3)
July	10.3	10.8	12.0	13.5	14.8	16.1	76.0	(76.0)	72.9	(72.9)	74.7	(74.6)
August	11.5	13.1	14.6	13.4	14.5	16.1	85.4	(85.4)	90.5	(90.5)	91.0	(91.0)
September	11.1	12.6	13.7	12.8	13.6	15.5	86.6	(86.6)	92.7	(92.7)	88.1	(88.1)
October	11.3	11.7	12.9	13.5	14.4	15.9	83.9	(83.9)	81.3	(81.3)	81.0	(80.9)
November	8.5	8.6	10.9	10.7	10.7	14.1	79.9	(79.9)	80.6	(80.6)	77.4	(77.4)
December	6.0	6.2	8.5	9.5	10.5	13.8	63.2	(63.2)	58.8	(58.8)	61.6	(61.6)
Total	110.5	114.0	132.9	137.9	146.1	169.8	80.1	(80.1)	78.0	(78.0)	78.2	(78.2)

Notes:

(i) Passenger load factor.

(ii) Revenue load factor.

3: Departures by Air (Scheduled Flights)

Table 3.03 Departures by Air to U.K. (Scheduled Flights), 2004 - 2006

	Seats used (000's)			Seats offered (000's)			Load factor (%)					
	2004	2005	2006	2004	2005	2006	2004		2005		2006	
							(i)	(ii)	(i)	(ii)	(i)	(ii)
January	8.7	11.9	10.5	12.4	15.8	15.7	70.0 (69.9)	75.4 (75.4)	66.6 (66.6)			
February	9.1	10.2	10.6	11.9	14.4	14.8	76.2 (76.2)	70.8 (70.8)	72.1 (72.1)			
March	11.6	11.8	13.2	15.4	16.6	17.6	75.3 (75.3)	71.1 (71.1)	75.5 (75.5)			
April	13.0	14.4	15.5	16.7	17.6	17.8	77.7 (77.7)	81.9 (81.9)	87.0 (87.0)			
May	12.3	14.4	15.8	20.2	21.1	19.3	61.0 (61.0)	68.8 (68.8)	82.1 (82.1)			
June	15.1	17.2	17.7	19.5	20.5	19.8	77.6 (77.6)	83.7 (83.7)	89.3 (89.3)			
July	14.9	16.3	16.3	20.0	21.1	19.6	74.2 (74.2)	77.5 (77.5)	83.1 (83.1)			
August	17.9	18.8	15.9	20.2	21.2	17.6	88.5 (88.5)	88.7 (88.7)	90.4 (90.4)			
September	17.1	19.0	15.4	19.6	20.4	17.2	87.2 (87.2)	92.8 (92.8)	89.5 (89.5)			
October	15.4	17.5	14.5	20.3	20.9	17.4	75.8 (75.8)	83.8 (83.8)	83.7 (83.7)			
November	12.6	12.6	10.5	15.2	16.6	11.6	83.1 (83.1)	75.8 (75.8)	90.0 (90.0)			
December	9.8	9.6	9.5	15.0	15.1	13.6	64.9 (64.9)	63.3 (63.3)	70.0 (70.0)			
Total	157.3	173.7	165.4	206.4	221.4	201.9	76.2 (76.2)	78.5 (78.5)	81.9 (81.9)			

Table 3.04 Departures by Air to U.K. (Scheduled Flights), 2007 - 2009

	Seats used (000's)			Seats offered (000's)			Load factor (%)					
	2007	2008	2009	2007	2008	2009	2007		2008		2009	
							(i)	(ii)	(i)		(i)	
January	8.6	9.7	12.5	11.4	13.0	15.6	75.6 (75.6)		74.5		80.0	
February	7.9	8.5	12.2	10.8	10.4	15.4	73.0 (73.0)		81.7		79.1	
March	8.9	10.3	15.0	12.7	12.3	18.7	69.8 (69.8)		83.4		80.3	
April	10.9	15.8	16.6	13.9	18.3	19.3	78.2 (78.2)		86.3		85.9	
May	12.7	16.2	16.5	17.0	19.4	18.8	74.8 (74.8)		83.3		87.7	
June	14.0	16.4	17.0	16.2	18.8	18.5	86.1 (86.1)		87.2		91.9	
July	14.1	18.0	16.6	16.9	21.5	19.0	83.7 (83.7)		83.7		87.5	
August	14.0	19.6	17.4	16.2	21.3	18.8	86.1 (86.1)		91.8		92.7	
September	15.3	20.0	17.3	16.4	22.3	18.4	93.4 (93.4)		89.8		93.9	
October	14.9	18.9	16.4	17.2	22.3	18.4	86.7 (86.7)		84.5		89.1	
November	12.0	15.8	12.0	13.2	19.4	14.1	91.1 (91.1)		81.2		85.2	
December	9.4	13.5	9.7	12.7	18.5	13.1	73.6 (73.6)		72.9		74.1	
Total	142.7	182.5	179.1	174.7	217.6	208.1	81.7 (81.7)		83.9		86.1	

Notes:

(i) Passenger load factor.

(ii) Revenue load factor.

3: Departures by Air (Scheduled Flights)

Table 3.05 Departures by Air to U.K. (Scheduled Flights), 2010 - 2012

	Seats used (000's)			Seats offered (000's)			Load factor (%)		
	2010	2011	2012	2010	2011	2012	2010	2011	2012
January	9.4	10.3	12.4	13.0	14.0	15.8	73.4	73.4	78.3
February	9.1	10.1	12.9	11.6	13.4	15.0	75.3	75.3	86.3
March	10.9	12.5	14.7	14.0	16.1	17.1	77.9	77.9	86.1
April	9.1	14.8	16.9	11.5	18.5	20.2	80.3	80.3	83.8
May	13.0	16.4	15.8	15.7	21.3	19.0	77.2	77.2	83.2
June	14.2	18.9	18.0	15.7	22.3	20.1	84.7	84.7	89.6
July	14.4	19.6	19.3	16.2	23.9	21.9	81.9	81.9	88.4
August	15.5	22.1	20.5	16.2	24.1	21.8	92.3	92.3	94.3
September	15.6	21.4	19.0	16.4	22.4	19.7	95.5	95.5	96.9
October	16.5	18.8	18.4	18.2	20.8	19.7	90.3	90.3	93.4
November	13.2	15.5	13.6	15.6	16.8	15.0	91.8	91.8	90.4
December	10.3	13.1	11.9	13.7	16.7	16.0	78.5	78.5	74.5
Total	151.1	193.5	193.6	178.0	230.1	221.2	84.8	84.1	87.5

Table 3.06 Departures by Air to U.K. (Scheduled Flights), 2013 - 2015

	Seats used (000's)			Seats offered (000's)			Load factor (%)		
	2013	2014	2015	2013	2014	2015	2013	2014	2015
January	10.1	13.4	12.6	13.5	18.3	16.3	74.9	73.0	77.1
February	11.8	13.4	12.3	13.8	17.6	15.5	84.9	76.0	79.8
March	13.3	16.0	14.8	16.3	19.7	17.7	81.7	81.2	83.5
April	14.7	16.8	16.7	17.4	19.5	19.5	84.0	86.4	85.6
May	15.5	16.6	18.8	19.5	20.4	22.9	79.6	81.4	82.1
June	18.2	18.0	20.9	20.7	21.2	23.8	87.7	84.9	87.7
July	19.5	19.9	21.6	22.8	23.8	25.2	85.3	83.7	85.7
August	21.4	22.4	23.9	22.8	24.4	25.7	93.9	91.5	92.8
September	21.1	21.5	23.5	22.8	23.2	24.6	92.4	92.7	95.6
October	18.2	20.6	22.7	22.3	22.2	24.9	81.5	92.8	91.0
November	15.6	16.6	18.0	19.0	19.5	20.5	82.2	84.7	87.5
December	14.0	14.0	14.3	16.5	18.9	19.9	85.0	73.9	71.7
Total	193.4	209.1	220.0	227.6	248.8	256.6	85.0	84.1	85.7

3: Departures by Air (Scheduled Flights)

Table 3.07 Departures by Air to U.K. (Scheduled Flights), 2016 - 2017

	Seats used (000's)		Seats offered (000's)		Load factor (%)	
	2016	2017	2016	2017	2016	2017
January	15.0	17.4	19.4	22.2	77.6	78.4
February	14.7	17.7	18.9	22.0	78.0	80.3
March	17.6	21.6	23.5	27.2	75.0	79.4
April	21.1	28.3	25.8	32.5	82.0	86.9
May	23.6	28.0	31.6	32.6	74.7	85.8
June	25.2	29.0	30.5	32.1	82.6	90.1
July	27.5	30.3	34.7	35.3	79.4	85.7
August	30.7	33.2	35.4	35.3	86.9	94.0
September	30.0	32.1	33.0	34.3	90.9	93.8
October	28.2	20.2	32.6	21.2	86.4	95.6
November	20.4	13.2	24.6	13.6	82.7	96.8
December	18.4	11.8	25.3	13.5	72.5	86.9
Total	272.6	282.6	335.3	321.8	81.3	87.8

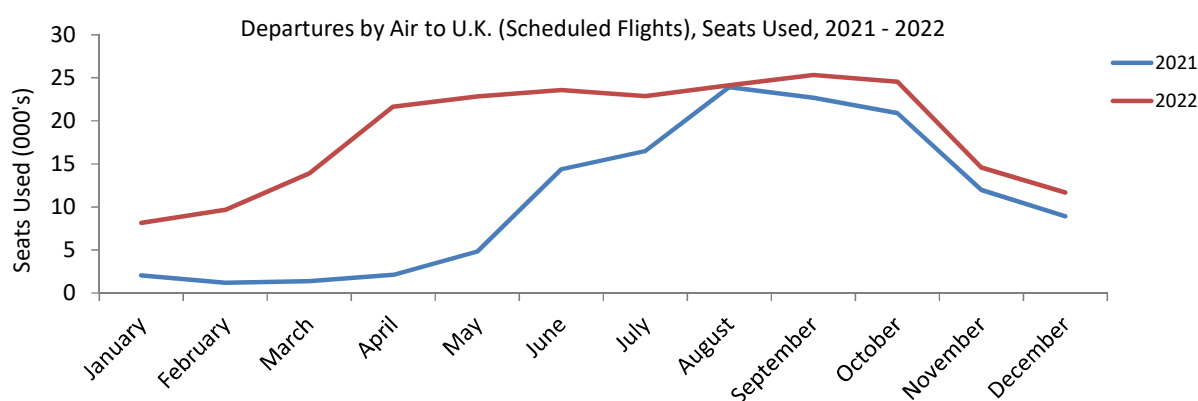
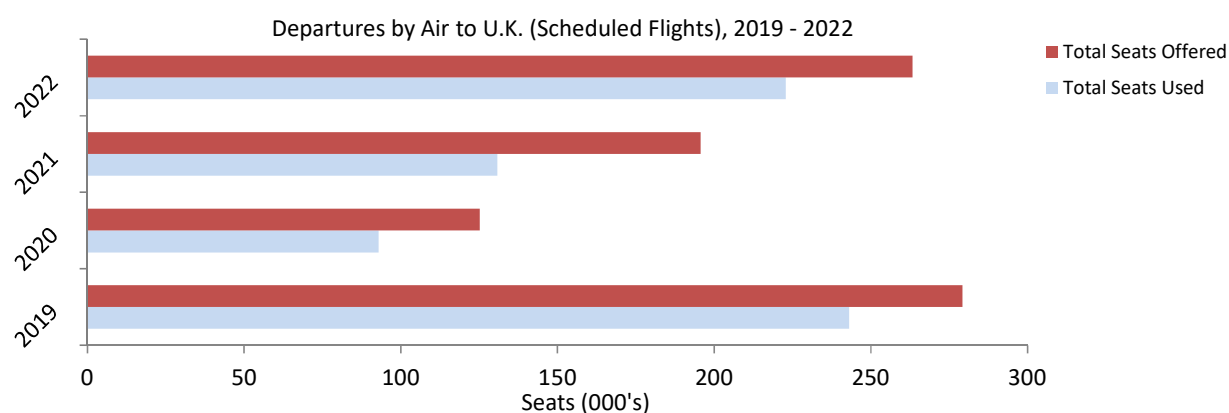
Table 3.08 Departures by Air to U.K. (Scheduled Flights), 2018 - 2019

	Seats used (000's)		Seats offered (000's)		Load factor (%)	
	2018	2019	2018	2019	2018	2019
January	10.9	13.5	12.0	16.8	90.4	80.7
February	12.6	14.9	13.7	18.1	91.5	82.6
March	13.1	17.4	15.2	20.2	85.7	85.8
April	18.6	21.0	19.8	24.4	93.7	86.0
May	19.2	23.2	21.0	28.2	91.5	82.2
June	21.9	24.9	22.9	27.7	95.4	89.9
July	22.6	23.4	25.2	27.7	89.9	84.6
August	24.6	26.5	25.7	28.5	95.4	92.9
September	23.7	25.9	25.0	28.0	94.7	92.4
October	19.9	23.7	21.1	26.8	94.6	88.1
November	15.3	14.9	18.3	16.0	83.4	93.0
December	14.9	14.0	19.5	16.9	76.3	82.8
Total	217.0	243.1	239.5	279.2	90.6	87.1

3: Departures by Air (Scheduled Flights)

Table 3.09 Departures by Air to U.K. (Scheduled Flights), 2020 - 2022

	Seats used (000's)			Seats offered (000's)			Load factor (%)		
	2020	2021	2022	2020	2021	2022	2020	2021	2022
January	12.4	2.1	8.2	13.8	4.5	11.8	90.0	45.8	69.0
February	14.0	1.2	9.7	16.0	1.8	11.9	87.7	66.9	81.5
March	9.8	1.4	13.9	13.7	2.4	18.0	71.5	57.3	77.1
April	0.7	2.1	21.7	2.6	3.5	25.8	25.5	60.8	83.9
May	1.7	4.8	22.8	3.1	9.8	28.2	56.5	49.0	81.0
June	2.0	14.4	23.6	2.9	22.3	25.7	67.4	64.5	91.7
July	3.3	16.5	22.9	4.6	30.0	27.4	72.2	54.9	83.4
August	13.7	23.9	24.1	19.2	32.9	25.5	71.0	72.6	94.6
September	13.6	22.7	25.3	17.9	31.0	28.5	76.1	73.1	89.0
October	12.5	20.9	24.5	17.0	26.7	29.0	73.4	78.2	84.6
November	3.6	12.0	14.6	4.8	14.7	16.4	75.5	81.6	88.7
December	5.7	8.9	11.7	9.8	16.1	15.0	58.7	55.5	77.6
Total	92.9	130.8	222.9	125.2	195.7	263.3	74.2	66.9	84.7



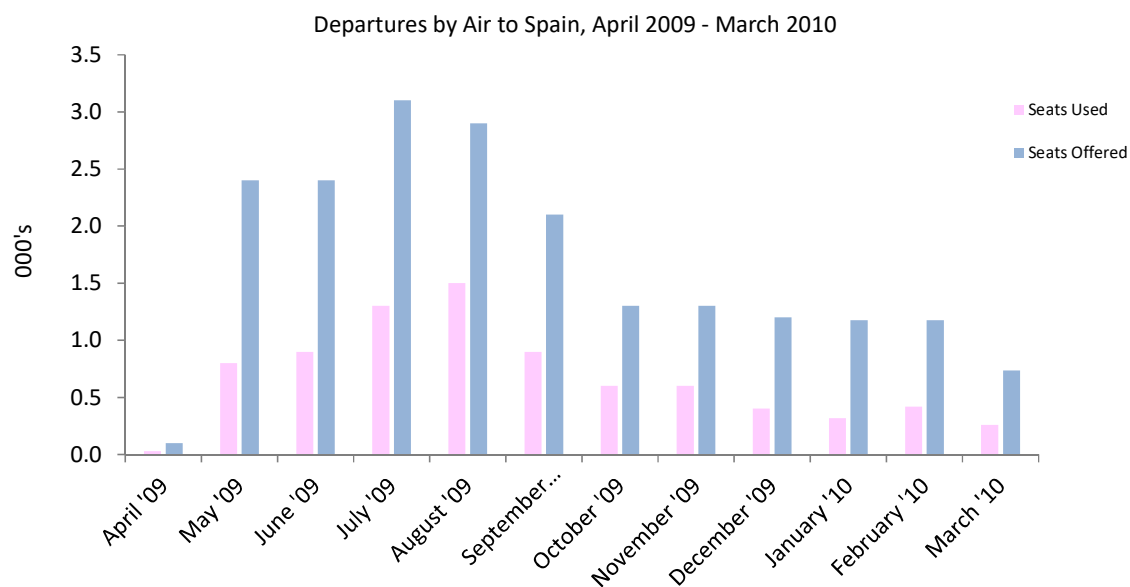
Note:

(i) Coronavirus (COVID-19) restrictions on air travel are evident during 2020 and earlier part of 2021.

3: Departures by Air (Scheduled Flights)

Table 3.10 Departures by Air to Spain (Scheduled Flights), 2008 - 2010

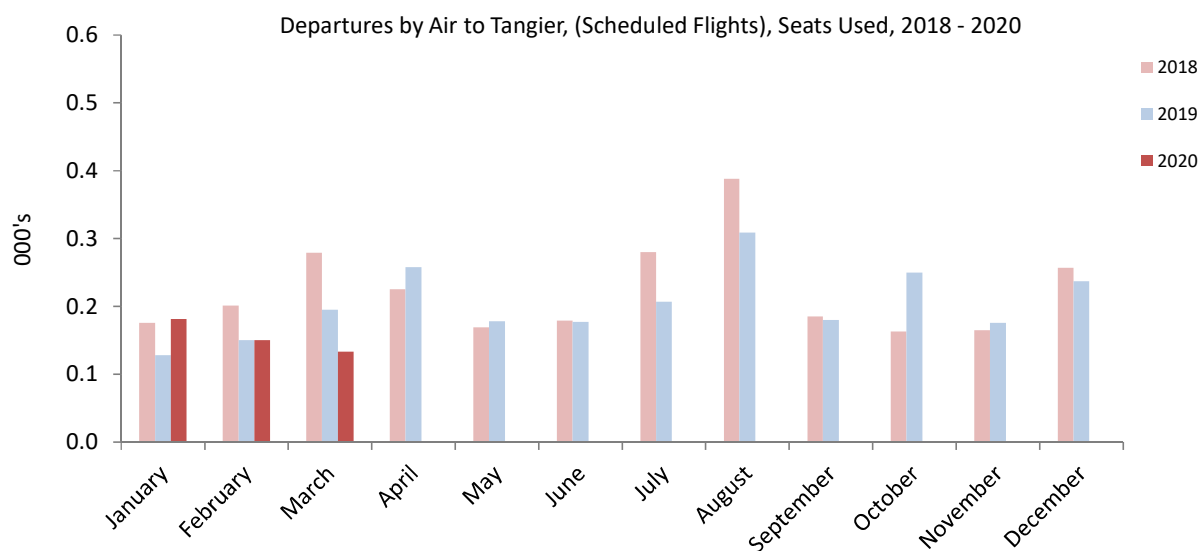
	Seats used (000's)			Seats offered (000's)			Load factor (%)		
	2008	2009	2010	2008	2009	2010	2008	2009	2010
January	0.4	-	0.3	1.1	-	1.2	35.7	-	27.0
February	0.4	-	0.4	1.3	-	1.2	34.5	-	35.5
March	0.6	-	0.3	1.3	-	0.7	47.2	-	35.5
April	0.3	0.0	-	1.1	0.1	-	25.1	29.6	-
May	0.4	0.8	-	1.3	2.4	-	34.0	33.4	-
June	0.6	0.9	-	1.0	2.4	-	56.7	37.4	-
July	0.6	1.3	-	1.1	3.1	-	55.8	41.5	-
August	0.9	1.5	-	1.4	2.9	-	67.3	50.5	-
September	0.5	0.9	-	1.1	2.1	-	45.7	42.2	-
October	-	0.6	-	-	1.3	-	-	44.1	-
November	-	0.6	-	-	1.3	-	-	47.3	-
December	-	0.4	-	-	1.2	-	-	36.3	-
Total	4.8	6.9	1.0	10.7	16.6	3.1	44.8	41.7	32.2



3: Departures by Air (Scheduled Flights)

Table 3.11 Departures by Air to Tangier (Scheduled Flights), 2018 - 2020

	Seats used (000's)			Seats offered (000's)			Load factor (%)		
	2018	2019	2020	2018	2019	2020	2018	2019	2020
January	0.2	0.1	0.2	0.6	0.6	0.6	20.3	20.3	28.7
February	0.2	0.2	0.2	0.6	0.6	0.6	26.8	26.8	26.8
March	0.3	0.2	0.1	0.6	0.6	0.4	31.0	31.0	38.0
April	0.2	0.3	-	0.6	0.6	-	46.1	46.1	-
May	0.2	0.2	-	0.6	0.6	-	28.3	28.3	-
June	0.2	0.2	-	0.6	0.6	-	31.6	31.6	-
July	0.3	0.2	-	0.6	0.6	-	37.0	37.0	-
August	0.4	0.3	-	0.6	0.6	-	49.0	49.0	-
September	0.2	0.2	-	0.6	0.6	-	32.1	32.1	-
October	0.2	0.3	-	0.5	0.6	-	44.6	44.6	-
November	0.2	0.2	-	0.6	0.6	-	31.4	31.4	-
December	0.3	0.2	-	0.6	0.6	-	42.3	42.3	-
Total	2.7	2.4	0.5	7.0	7.0	1.5	38.1	34.9	30.1



Note:

(i) Flights to and from Tangier were suspended in April 2020 due to the Coronavirus (COVID-19) global pandemic and did not resume during 2021.

4: Arrivals by Air (Charter Flights)

Table 4.01 Arrivals by Air (Charter Flights), 2007, 2009 - 2010

	Seats used (000's)			Seats offered (000's)			Load factor (%)		
	2007	2009	2010	2007	2009	2010	2007	2009	2010
January	-	-	-	-	-	-	-	-	-
February	-	-	-	0.1	-	-	32.8	-	-
March	-	-	-	-	-	-	-	-	-
April	-	-	-	0.1	-	-	50.0	-	-
May	-	-	0.2	0.4	-	0.4	-	-	56.7
June	-	-	-	0.2	-	-	-	-	-
July	0.4	-	-	0.5	-	-	67.9	-	-
August	-	0.2	-	-	0.2	-	-	83.1	-
September	-	-	0.3	0.2	-	0.5	-	-	67.3
October	-	-	-	-	-	-	-	-	-
November	-	-	-	0.2	-	-	20.6	-	-
December	-	-	-	0.1	-	-	-	-	-
Total	0.5	0.2	0.5	1.8	0.2	0.8	25.0	83.1	62.6

Table 4.02 Arrivals by Air (Charter Flights), 2014 - 2016

	Seats used (000's)			Seats offered (000's)			Load factor (%)		
	2014	2015	2016	2014	2015	2016	2014	2015	2016
January	-	-	-	-	-	-	-	-	-
February	-	-	-	-	-	-	-	-	-
March	-	-	-	-	-	-	-	-	-
April	0.1	-	-	0.2	-	-	46.2	-	-
May	0.1	-	0.1	0.5	-	0.2	24.5	-	90.4
June	0.1	0.2	-	0.1	0.3	-	40.7	84.0	-
July	-	-	-	0.1	-	0.1	16.4	-	66.0
August	-	-	-	-	-	-	-	-	-
September	-	-	-	-	-	-	-	-	-
October	-	-	-	-	-	-	-	-	-
November	-	-	-	-	-	-	-	-	-
December	-	-	-	-	-	-	-	-	-
Total	0.3	0.2	0.2	1.0	0.3	0.2	30.3	84.0	84.5

4: Arrivals by Air (Charter Flights)

Table 4.03 Arrivals by Air (Charter Flights), 2017 - 2019

	Seats used (000's)			Seats offered (000's)			Load factor (%)		
	2017	2018	2019	2017	2018	2019	2017	2018	2019
January	-	-	-	-	-	-	-	-	-
February	-	-	-	-	-	-	-	-	-
March	-	-	0.1	-	-	0.1	-	-	62.0
April	-	-	-	-	-	-	-	-	-
May	-	-	-	-	-	-	-	-	-
June	-	-	0.0	-	-	0.1	-	-	36.0
July	0.2	-	0.7	0.2	-	0.9	100.0	-	81.6
August	-	-	-	-	-	-	-	-	-
September	-	0.0	0.0	-	0.5	0.1	-	9	46.3
October	-	0.0	0.0	-	0.3	0.1	-	10.3	37.0
November	-	0.0	-	-	0.3	-	-	10.6	-
December	-	-	-	-	-	-	-	-	-
Total	0.2	0.1	0.9	0.2	1.2	1.3	100.0	9.8	70.7

Table 4.04 Arrivals by Air (Charter Flights), 2020 - 2022

	Seats used (000's)			Seats offered (000's)			Load factor (%)		
	2020	2021	2022	2020	2021	2022	2020	2021	2022
January	-	0.1	-	-	0.2	-	-	63.7	-
February	-	0.1	0.3	-	0.2	0.3	-	51.8	87.5
March	-	0.3	-	-	0.8	-	-	33.7	-
April	-	-	-	-	-	-	-	-	-
May	-	-	-	-	-	0.2	-	-	-
June	0.0	0.0	0.1	0.1	0.3	0.5	43.8	14.2	19.6
July	0.1	0.1	-	0.3	0.4	-	26.7	20.3	-
August	0.1	0.1	-	0.5	0.7	-	22.4	12.6	-
September	0.2	0.2	0.0	0.7	0.6	0.2	23.0	29.5	26.3
October	0.2	0.1	-	0.8	0.7	-	24.8	18.3	-
November	0.1	0.2	-	0.3	0.9	-	24.0	21.6	-
December	0.0	0.0	-	0.5	0.3	-	10.4	18.5	-
Total	0.7	1.2	0.4	3.1	4.8	1.1	22.5	24.8	37.6

Note:

(i) As from 2019, passengers arriving on a charter flight need not necessarily mean they used the same mode of transport to depart from Gibraltar.

5: Departures by Air (Charter Flights)

Table 5.01 Departures by Air (Charter Flights), 2007, 2009 - 2010

	Seats used (000's)			Seats offered (000's)			Load factor (%)		
	2007	2009	2010	2007	2009	2010	2007	2009	2010
January	-	-	-	-	-	-	-	-	-
February	-	-	-	0.1	-	-	32.8	-	-
March	-	-	-	-	-	-	-	-	-
April	-	-	-	0.1	-	-	50.0	-	-
May	0.2	-	0.2	0.4	-	0.4	59.6	-	65.3
June	0.2	-	-	0.2	-	-	100.0	-	-
July	0.2	-	-	0.5	-	-	42.0	-	-
August	-	0.2	-	-	0.2	-	78.6	88.6	-
September	0.2	-	0.3	0.2	-	0.5	73.5	-	73.4
October	-	-	-	0.0	-	-	-	-	-
November	-	-	-	0.2	-	-	18.6	-	-
December	0.1	-	-	0.1	-	-	73.6	-	-
Total	1.0	0.2	0.6	1.8	0.2	0.8	56.0	88.6	69.8

Table 5.02 Departures by Air (Charter Flights), 2014 - 2016

	Seats used (000's)			Seats offered (000's)			Load factor (%)		
	2014	2015	2016	2014	2015	2016	2014	2015	2016
January	-	-	-	-	-	-	-	-	-
February	-	-	-	-	-	-	-	-	-
March	-	-	-	-	-	-	-	-	-
April	0.1	-	-	0.2	-	-	43.8	-	-
May	0.1	-	-	0.5	-	0.2	19.0	-	-
June	0.1	-	-	0.1	-	-	46.4	80.0	-
July	-	0.2	0.0	0.1	0.2	0.1	12.9	84.8	66.0
August	-	-	-	-	-	-	-	-	-
September	-	-	-	-	-	-	-	-	-
October	-	-	-	-	-	-	-	-	-
November	-	-	-	-	-	-	-	-	-
December	-	-	-	-	-	-	-	-	-
Total	0.3	0.2	0.0	1.0	0.3	0.2	27.3	84.0	16.0

5: Departures by Air (Charter Flights)

Table 5.03 Departures by Air (Charter Flights), 2017 - 2019

	Seats used (000's)			Seats offered (000's)			Load factor (%)		
	2017	2018	2019	2017	2018	2019	2017	2018	2019
January	-	-	-	-	-	-	-	-	-
February	-	-	-	-	-	-	-	-	-
March	-	-	0.1	-	-	0.1	-	-	62.0
April	-	-	-	-	-	-	-	-	-
May	-	-	-	-	-	-	-	-	-
June	-	-	0.1	-	-	0.1	-	-	72.0
July	0.2	-	0.5	0.2	-	0.6	100.0	-	83.8
August	-	-	0.1	-	-	0.1	-	-	80.8
September	-	0.4	0.2	-	0.5	0.3	-	77.8	56.1
October	-	0.0	0.0	-	0.3	0.1	-	10.3	37.0
November	-	0.0	-	-	0.3	-	-	10.6	-
December	-	-	-	-	-	-	-	-	-
Total	0.2	0.5	0.9	0.2	1.2	1.3	100.0	39.0	71.4

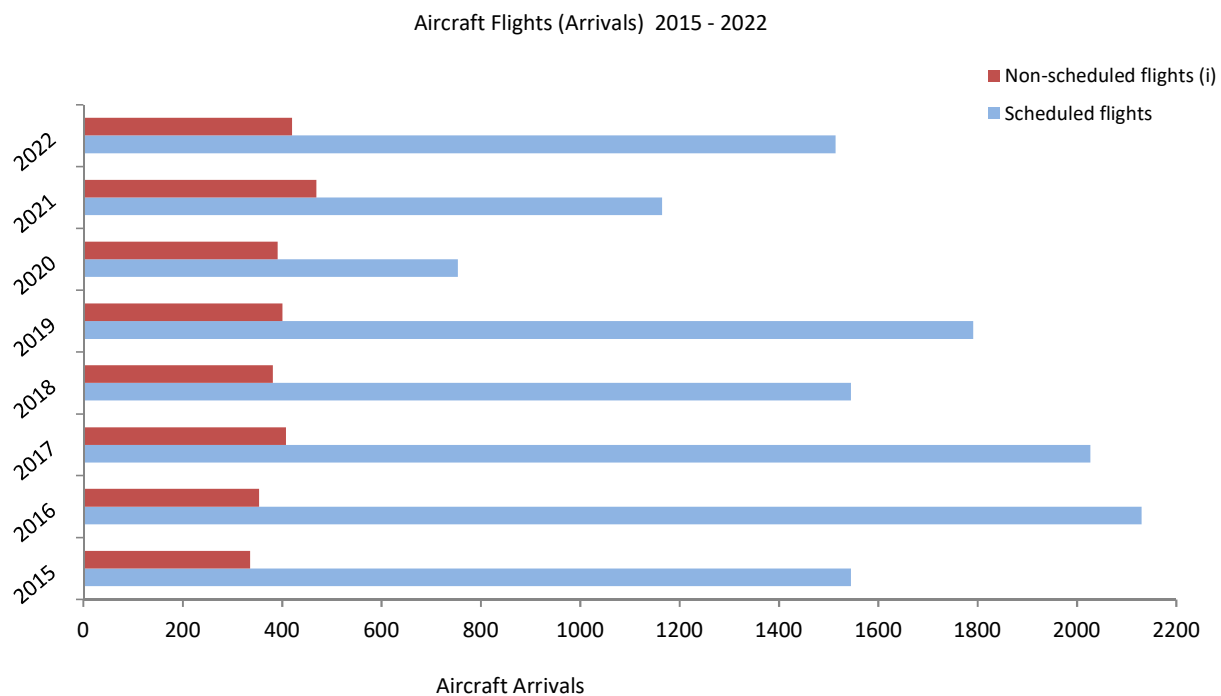
Table 5.04 Departures by Air (Charter Flights), 2020 - 2022

	Seats used (000's)			Seats offered (000's)			Load factor (%)		
	2020	2021	2022	2020	2021	2022	2020	2021	2022
January	-	0.1	-	-	0.2	-	-	33.9	-
February	-	0.0	-	-	0.2	0.3	-	22.4	-
March	-	0.3	-	-	0.8	-	-	33.4	-
April	-	-	-	-	0.0	-	-	-	-
May	0.3	-	0.0	0.4	0.0	0.2	88.9	-	25.0
June	-	0.0	0.1	0.1	0.3	0.5	-	14.2	19.6
July	0.1	0.1	-	0.3	0.4	-	38.0	20.3	-
August	0.1	0.1	-	0.5	0.7	-	22.4	18.5	-
September	0.2	0.1	0.0	0.7	0.6	0.2	23.0	23.9	26.3
October	0.3	0.1	0.1	0.8	0.7	0.3	31.3	11.7	32.8
November	0.1	0.3	-	0.3	0.9	-	24.0	28.5	-
December	0.2	0.0	-	0.5	0.3	-	44.0	18.5	-
Total	1.2	1.1	0.3	3.4	4.8	1.4	35.3	23.2	19.5

6: Aircraft Arrivals

Table 6.01 Aircraft Arrivals, 2015 - 2022

Year	Scheduled flights	Non-scheduled flights ⁽ⁱ⁾	Total flights
2015	1,545	336	1,881
2016	2,130	354	2,484
2017	2,027	408	2,435
2018	1,545	381	1,926
2019	1,791	401	2,192
2020	754	391	1,145
2021	1,165	469	1,634
2022	1,514	420	1,934

**Notes:**

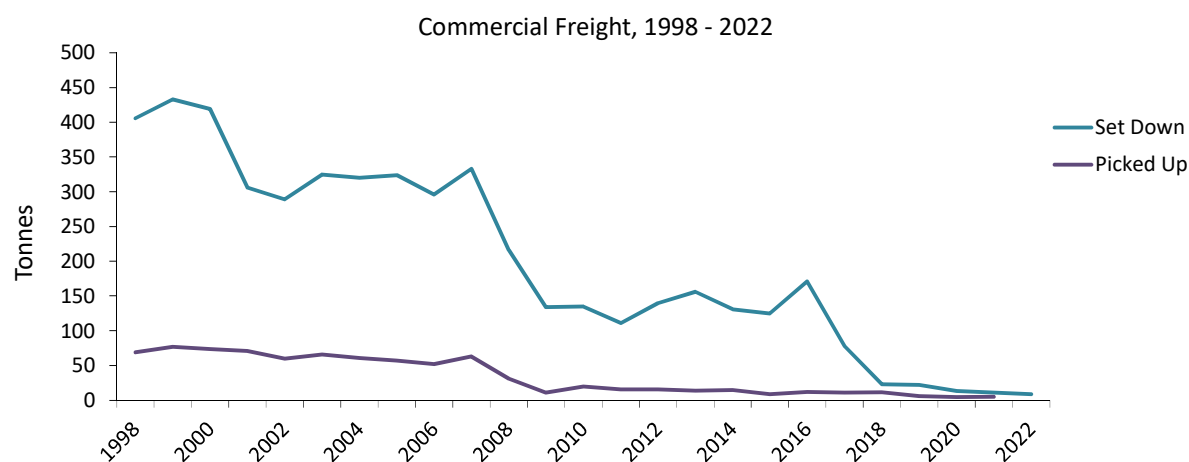
(i) Non-scheduled flights include commercial charters, business jets and light aircrafts.

(ii) The impact of the Coronavirus (COVID-19) global pandemic on air travel is evident in 2020 and 2021.

7: Commercial Freight

Table 7.01 Commercial Freight, Set Down/Picked Up by Air, Gibraltar, 1998 - 2022

Year	Set Down (000's kgs)	% Change	Picked Up (000's kgs)	% Change
1998	406	-	69	-
1999	433	6.7	77	11.6
2000	419	-3.2	74	-3.9
2001	306	-27.0	71	-4.1
2002	289	-5.6	60	-15.5
2003	325	12.5	66	10.0
2004	320	-1.5	61	-7.6
2005	324	1.3	57	-6.6
2006	296	-8.6	52	-8.8
2007	333	12.5	63	21.2
2008	216	-35.1	31	-50.8
2009	134	-38.0	11	-64.5
2010	135	0.7	20	81.8
2011	111	-17.8	16	-20.0
2012	140	26.1	16	0.0
2013	156	11.4	14	-12.5
2014	131	-16.0	15	7.1
2015	125	-4.6	9	-40.0
2016	171	36.8	12	33.3
2017	78	-54.4	11	-8.3
2018	23	-70.5	12	5.7
2019	22	-4.4	6	-48.4
2020	13	-39.0	5	-20.0
2021	11	-15.6	5	1.5
2022	9	-22.7	4	-24.3



Note:

Commercial freight includes from/to all destinations.